



MONTHLY MEMBERSHIP PROGRESS REPORT

District 2 T1

Results as of: 5/31/2015

GMT: HAL GRIFFIN

LOCATION TEXAS

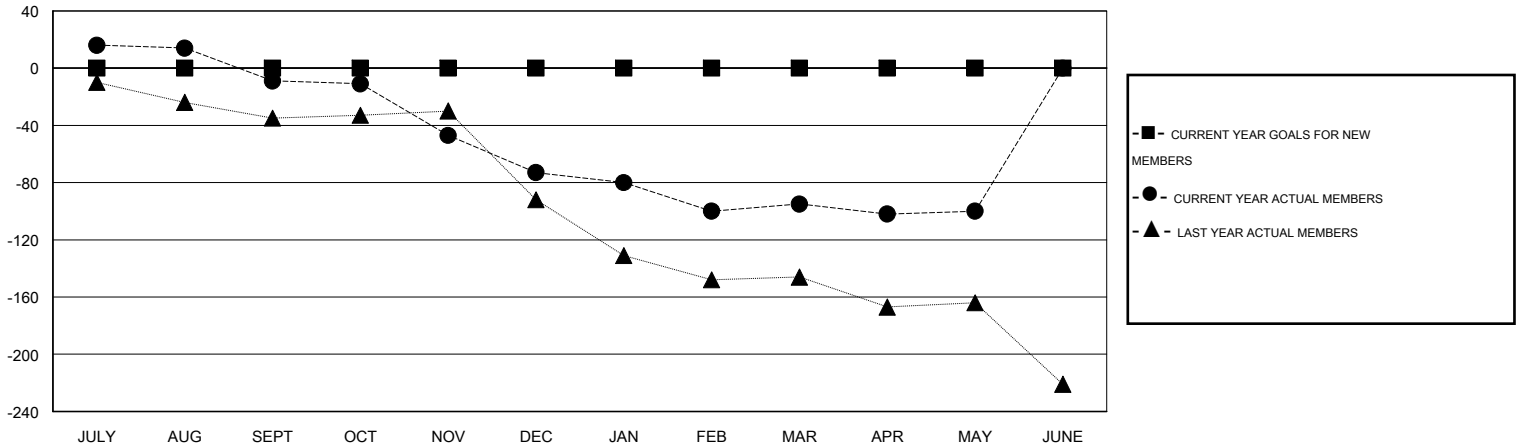
GMT CA 1

Clubs					Members				
RESULTS FOR 2014-2015					RESULTS FOR 2014-2015				
QUARTER	NEW CLUB GOAL	NEW CLUBS	DROPPED CLUBS	NET GAIN/LOSS	QUARTER	NEW MEMBER GOAL	CHARTER AND NEW MEMBERS ADDED	DROPPED MEMBERS	NET GAIN/LOSS
JULY/AUG/SEPT	0	0	0	0	JULY/AUG/SEPT	0	61	70	-9
OCT/NOV/DEC	0	0	3	-3	OCT/NOV/DEC	0	34	98	-64
JAN/FEB/MAR	0	0	1	-1	JAN/FEB/MAR	0	36	58	-22
APR/MAY/JUNE	0	0	0	0	APR/MAY/JUNE	0	14	19	-5

GOALS AND ACTUAL NEW CLUBS CUMULATIVE



GOALS AND ACTUAL MEMBERS CUMULATIVE



DROPPED CLUBS: 4	26 CLUBS OF 44 ADDED 1 OR MORE NEW MEMBERS	GENDER DISTRIBUTION
		MALE 924 (72.02%)
		FEMALE 359 (27.98%)
DROPPED MEMBERS	CLICK HERE FOR HEALTH ASSESSMENT DATA	FAMILY UNIT MEMBERS 164
DECEASED 20		HEAD OF HOUSEHOLD 82
CLUB CANCELLED 28		NON-HEAD OF HOUSEHOLD 82
OTHER 197		
TOTAL 245		